

Item 5.1

HALLGREN, RESTIFO, LOOP & COUGHLIN, ARCHITECTS

February 23, 2009

Window Replacement for Sugar Grove Elementary School
for
Warren County School District

Demolition

- Remove and recycle 6,000 square feet of Aluminum Windows

6,000 s.f. windows @ \$4.00 per s.f. = \$ 24,000.00

- Remove and recycle 730 square feet of Aluminum Door

730 s.f. windows @ \$4.00 per s.f. = \$ 2,920.00

New Construction

- Furnish and install 2'-0" high Nanogel Kalwall Transom Panels

1,530 s.f. @ \$67.00 per s.f. = \$ 102,510.00

- Furnish and install 135 Insulated Mapes Panels with an R Value of 22

2,270 s.f. @ \$40.00 per s.f. = \$ 90,800.00

- Furnish and install 49 Triple Glazed Aluminum Windows

1,128 s.f. @ \$50 per s.f. = \$ 56,400.00

- Furnish and install 135 Triple Glazed Ventilating Sash with Screens

870 s.f. @ \$50 per s.f. = \$ 43,500.00

- Furnish and install 21 Door Openings with Insulated Glass and Insulated Mapes Panels

289 s.f. @ \$40 per s.f. = \$ 11,560.00

- Ten pair of Door Openings @ \$ 5,000 each = \$ 50,000.00

Sub Total	\$381,690.00
Contractor Profit @ 10%	38,168.00
Contingency @ 5%	<u>19,084.00</u>

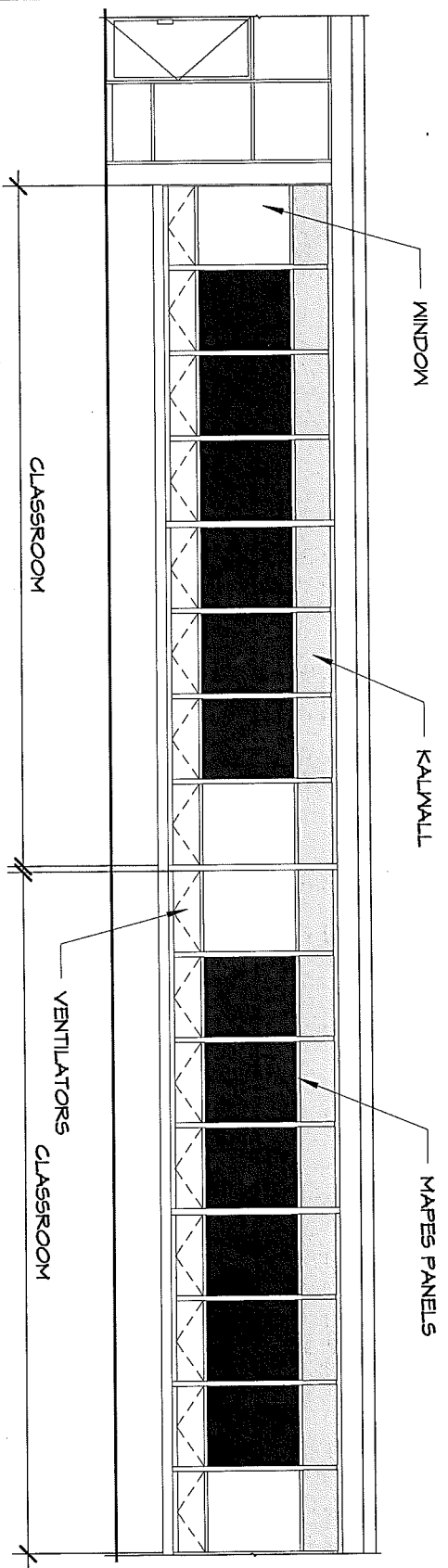
ESTIMATED TOTAL

\$438,942.00

Item 5.1

TYPICAL WINDOW REPLACEMENT

SCALE: 1/8" = 1'-0"



SUGAR GROVE ELEMENTARY SCHOOL	TYPICAL WINDOW REPLACEMENT	02/23/09	H
HALLGREN RESTIFO LOOP & COUGHLIN			R
			L
			U