



pennsylvania
DEPARTMENT OF GENERAL SERVICES

October 31, 2013

Warren County School District
185 Hospital Drive
North Warren, PA 16365

Re: Lease Agreement with the Commonwealth of Pennsylvania
Warren State Hospital, Stone Building
Lease Amendment No. 2

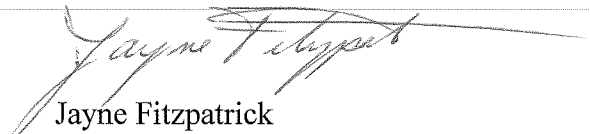
To Whom It May Concern:

I am enclosing three copies of the Lease Amendment that added an additional 336 square feet to the original Lease Agreement. This Amendment will reflect an increase to your monthly utility charges, as well.

Please sign the three copies and return them to me in order to complete the signatory process. Upon acquiring all the signatures, you will receive an executed copy of the Amendment for your file.

If you have any questions regarding the Amendment, please contact me at (717) 787-2834.

Sincerely,



Jayne Fitzpatrick
Administrative Officer

Enclosures (3)

Bureau of Real Estate

503 North Office Building | Harrisburg, PA 17125-001 | 717.787.2834 | F 717.783.0570

www.dgs.state.pa.us

LEASE AMENDMENT NO. 2

LML-A-1996-23-2

THIS AMENDMENT, entered into this ____ day of _____, 2013, will serve to amend the Lease Agreement dated December 20, 1996, for approximately 6,650 square feet of space located on the second floor of the Stone Building, Warren State Hospital, 33 Main Drive, North Warren, Pennsylvania 16365.

The aforementioned Lease Agreement is between the Commonwealth of Pennsylvania, acting through the Department of General Services, with the approval of the Department of Public Welfare, hereinafter referred to as Lessor, and Warren County School District, hereinafter referred to as Lessee.

The sole intention of this Lease Amendment is to add 336 square feet (Room 202) of space to the leased premises located in the Stone Building, as shown on the attached *Exhibit "A"* and made a part hereto, for a total of 6,986 square feet of space, which will increase the monthly utility charge which is based on the current rates.

The effective date of this Amendment is November 1, 2013.

All other terms and conditions of this Lease Agreement which are not changed by this Lease Amendment remain in full force and effect.

IN WITNESS WHEREOF the parties hereto have caused this Lease
Amendment to be duly executed by their respective authorized officers and officials, and their
respective seals affixed as of the day and year first above written.

WITNESS:

WITNESS:

Secretary/Treasurer

COMMONWEALTH OF PENNSYLVANIA
Department of General Services

Secretary Date

LESSEE: Warren County School District

President/Vice President

APPROVED:
DEPARTMENT OF PUBLIC WELFARE

Secretary Date

APPROVED AS TO FORM AND LEGALITY:

Office of Chief Counsel
Department of General Services

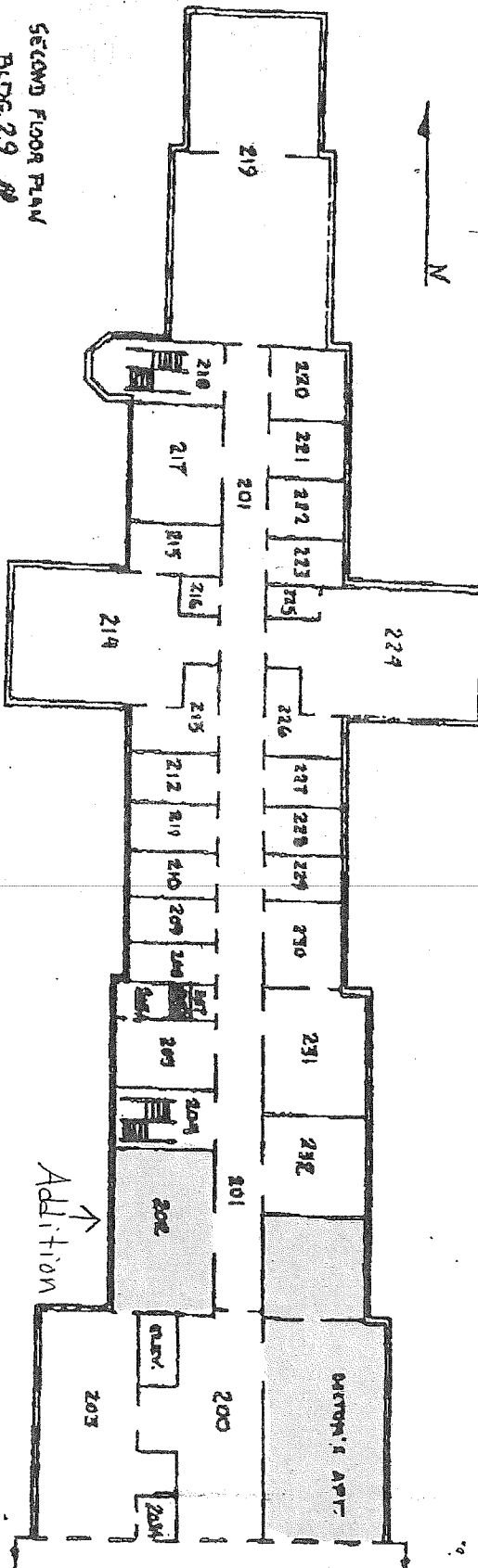
OFFICE OF GENERAL COUNSEL

OFFICE OF ATTORNEY GENERAL

Office of Chief Counsel
Department of Public Welfare

APPROVED:

GOVERNOR



SECOND FLOOR PLAN
Bldg. 29
SCALE 1"=20'
#702

