



NORTHWEST TRICOUNTY INTERMEDIATE UNIT
INTEGRITY • SERVICE • ACCOUNTABILITY

Preliminary 2020-2021

Budget Summary

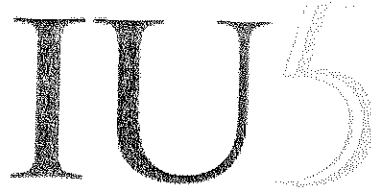
Preliminary 2020-2021 Budget



The Intermediate Unit Administration will present the complete Intermediate Unit budget to the Superintendents, the School Districts and the Intermediate Unit Board at least one (1) month prior to submittal to the School Districts for approval.

The Intermediate Unit Administration will meet with each Superintendent prior to any School District vote and review in detail, either jointly or separately, the complete Intermediate Unit budget.

- IU Board Approved Resolution and Action Plan, December 2012



MISSION STATEMENT

The Northwest Tri-County Intermediate Unit, an educational service agency, enriches diverse communities by creating and implementing quality services to meet the current and unique needs of all learners through safe and innovative environments.

VISION STATEMENT

Through collaborative leadership, the IU engages active learning guided by excellence in service.

SHARED VALUES

Values are core operating principles that are shared across the organization.

- › Transparency in operations is paramount.
- › Our school districts' needs and PDE directives shape our IU and its work.
- › All students can learn.
- › Learning is a partnership among schools, families, and communities.
- › Diversity must be recognized and valued.
- › Personal wellness and fitness are essential life habits.
- › Change is inevitable.
- › Learning is a life-long process.
- › Service is in our name.



2019-2020 Intermediate Unit Goals

Seek and develop resources for districts to provide supplemental support for addressing students' social emotional well-being

Make learning and teaching fun by creating authentic and engaging environments that establish real purpose and meaning for learning

Work collaboratively with member districts to update and develop curriculum materials in order to equitably reduce the achievement gap for all students

Implement authentic performance-based professional development experiences that build upon the talents of the adult learner and reach the whole child as well

Empower all learners to make informed college and career readiness decisions by providing opportunities to identify talents, interests, and 21st Century essential workplace skills that are embedded into the academic curriculum daily

Attract, retain and develop a diverse staff, dedicated to life-long learning

Build and participate in professional governmental networks that promote educational excellence throughout the region and state

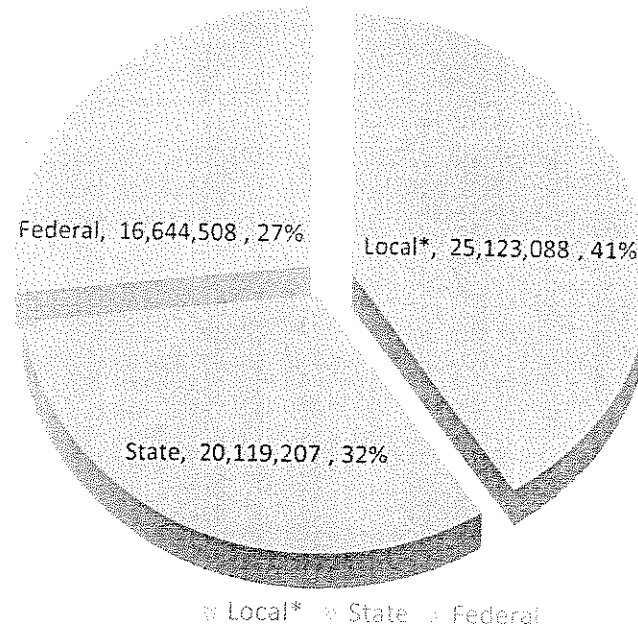
Seek and develop resources to ensure that safe, educationally sound facilities are available to all students

Foster positive parent, community, business and industry relationships that promote and market local educational opportunities as well as IU programs and services

Use research-based strategies to improve workplace culture

REVENUE

IU Funding by Source



*Sources of Local Funds include School Districts, Charter Schools, other LEAs in PA and grants.

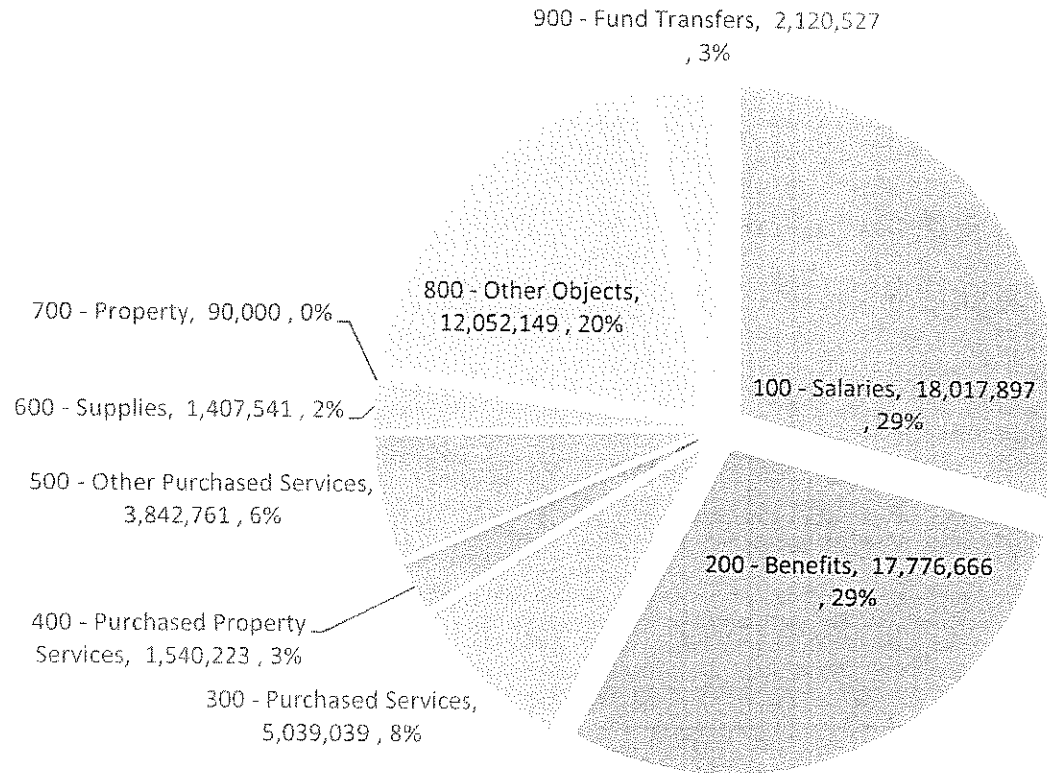
Proposed 2020-2021 IU Budget was prepared using costs and data **at the time** of budget preparation (September 2019 – January 2020).

REVENUE ASSUMPTIONS

- 2019-2020 grant allocation amounts used to prepare 2020-2021 budgets
- Grant amounts shown as revenue in the program to offset expenses
- Revenue for social security for all state and local programs recorded at “New” or “Existing” Rates
- Revenue for retirement for all programs recorded at “New” or “Existing” Rates
- SIS Assigned Fund Balance will be used to balance the SIS budget
- Unassigned Fund Balance will be used to balance the Support Services budget
- Proposed 2020-2021 Budget does not reflect changes in Special Ed classrooms and services – through Transfer of Entity (TOE)

EXPENDITURES

Expenditures by Object



EXPENDITURE ASSUMPTIONS

- Salary increase
- Insurance increase
- Retirement increase (at proposed level 34.79%)
- Indirect Cost at 2019-2020 State approved rate unless specified by program. Exceptions: Title I Consortium at 6%, Special Education classrooms at 3%, Institutional programs at 6% (3% for host district/3% for IU)

ending ource	Description	2019-2020 Adopted Budget	2020-2021 Preliminary Budget	Program Narrative	Funding Type	Mandatory
010	General Operating	588,977.00	600,439.00	Executive and Board Services	Local	Yes
020	School Improvement Services (SIS)	2,002,502.00	1,942,838.00	Provide services and support in Curriculum, Instruction, and Assessment	Local	Yes
101	Pre-K Courts	42,551.00	39,156.00	Funds from PreK programs to provide supervision and evaluation from IU staff	Local	No
104	Edinboro Community Based Transition Program	830.00	830.00	Edinboro autistic class - graduation funds raised through classroom fundraising activities	Local	No
105	Support Services	3,844,426.00	3,723,395.00	Human Resources, Finance, Technology, Internal Operations	Local	Yes
106	ITS SD Services	6,429.00	6,429.00	Technology services for districts	Local	No
107	ITS Billable Services	356,329.00	198,053.00	Billable technology services	Local	No
109	Title I Billable Services	241,043.00	258,797.00	Provides nonpublic Title I services in the Millcreek nonpublic schools. Service is provided at the request of the Diocese of Erie and the Millcreek Township School District	Local	No
110	ESL Consortium	762,190.00	703,316.00	IUS provides ESL services, which includes, screening, direct instruction and assessment to any EL student in the tri-county area	Local	No
115	Emergency Substitute Consortium	12,198.00	24,159.00	Consortium of member districts who contribute an annual fee to operate the emergency substitute consortium	Local	No
117	Solutionwhere/Coursewhere	5,315.00	5,315.00	Pass through account used to collect funds for consortium CourseWhere users	Local	No
120	Inservice	154,480.00	160,187.00	Inservice and Educational Offerings	Local	No
123	PaTTAN	-	7,000.00	Pathways to Graduation Project funded through a contract with PaTTAN and provides support to build LEA's capacity to increase graduation rates and decrease dropout rates for students with disabilities.	Local	No
125	Regional Choice Initiative - Erie County Academy	180,160.00	160,297.00	Superintendent-led program, "dual enrollment" concept managed by IU and located at the ECTS on Oliver Road. IU duties include leading committee meetings, scheduling of college/university courses, parent and student orientations, day-to-day supervision of program	Local	No
126	Regional Choice Initiative - Crawford County	-	52,139.00	Superintendent-led program, "dual enrollment" concept managed by IU and located at the CCCTS on Thurston Road. IU duties include leading committee meetings, scheduling of college/university courses, parent and student orientations, day-to-day supervision of program	Local	No
136	Foundation Grant	2,075.00	800.00	Grants run through the Northwest Tri-County Educational Foundation	Local	No
138	Homeless & Foster Care	39,118.00	82,087.00	Program objectives and activities are intended to remove barriers to enrollment and educational success, and to ensure that education is as uninterrupted as possible while students are homeless, awaiting or in Foster Care	Local	No
143	Fall Regional Common Inservice Day	630.00	630.00	Pass through account for a cooperative endeavor involving IU5, School Districts, Curriculum Directors, and Specialty Educators for a Fall Common Inservice Day	Local	No
145	Opioid Summit	-	49,086.00	The Summit will afford State and Local professionals the opportunity to collaborate and continue to build networks in response to the opioid crisis in Pennsylvania.		
147	Migrant Summer School	48,170.00	175,274.00	IUS partners with the Erie's Public Schools, York County, Adams County and Franklin County to offer the Migrant Summer Program which provides academic support to migrant children	Local	No
148	PHC	36,760.00	36,760.00	PHC mentors work with instructional coaches to focus on increasing student engagement and improving student achievement through the implementation of the PLN framework and other evidence-based literacy strategies	Local	No
151	SAS Institute	518,178.00	496,417.00	IUS has provided logistical support for the PDE Standards Aligned Systems Institute since 2009. The Institute brings together 1100 (+) educators for a three-day learning event focused on PDE initiatives	State	No
156	QOL Urban Free Community Development Corporation	71,734.00	66,739.00	Funding provided by Quality of Life Learning Center to help support Adult Education classes held at that location	Local	No
157	Local Adult Ed	12,698.00	7,530.00	Provides community-based adult basic education, english language instruction, workplace and postsecondary readiness services	Local	No
159	Education Innovation Fund	2,470.00	2,470.00	Program used for educational experiences and enrichment opportunities for teachers and students that are not allowable expenses from other state and federal grants and resources.	Local	No
161	Crawford County Jail Adult Education	-	37,344.00	Provides adult education at the Crawford County Correctional Facility.	Local	No
168	Student Enrichment/Project Based Learning	12,250.00	10,000.00	Program focused on improving student skills and educational outcomes through high quality educational experiences for both teachers and students. Through inquiry, design challenges, and project-based-learning activities, students will have opportunities for educational enrichment through non-traditional curricular enhancements	Local	No
171	Brighter Horizons	232,429.00	235,684.00	Funds to support Special Ed and Alt Ed students in residential program, one classroom, located in General McLane	Local	Yes
173	Andromeda House	-	475,830.00	Funds to support students in the Residential Treatment Facility (one classroom) and Intensive Treatment Units (one classroom) at Andromeda House located in Union City SD bounds	Local	Yes
175	Edmund Thomas Alt Ed	203,967.00	205,495.00	Funds to support Detention Center students, one classroom, located in Millcreek	Local	Yes
176	Hermitage House - CS Det/Shell	176,085.00	185,037.00	Funds to support students placed in shelter, Crawford County, one classroom, located in PENNCREST	Local	Yes

Funding Source	Description	2019-2020 Adopted Budget	2020-2021 Preliminary Budget	Program Narrative	Funding Type	Mandatory
177	Bethesda Alternative Education Program	757,400.00	737,460.00	Funds to support Special Ed and Alt Ed students in residential program and day treatment partial hospitalization programs, 5 classrooms, located in PENNCREST	Local	Yes
179	Hermitage House Alternative Ed Program	306,271.00	324,854.00	Funds to support Special Ed and Alt Ed students in residential programs, two classrooms, located in PENNCREST	Local	Yes
180	Bethesda Acute Partial	175,143.00	184,740.00	Funds to support Acute MH day treatment school program, one classroom, all of Crawford County districts, located in PENNCREST	Local	Yes
181	Bethesda Partial Program	954,162.00	978,522.00	Funds to support Special Ed and regular education students in partial hospitalization programs, 5 classrooms, located in PENNCREST	Local	Yes
182	Bethesda Therapeutic Program	-	270,107.00	Funds to support elementary aged students from PENNCREST and Conneaut SD who are in need of a Therapeutic Educational day programming who would not qualify for partial or residential programming	Local	Yes
195	Student Programs	18,328.00	18,940.00	A variety of competitions and academic camps to help increase student achievement for students in the IU5 region	Local	No
196	COLL Retirement	172,185.00	207,085.00	Corporate Owned Life Insurance Policy & Retirement payments	Local	No
197	Wellness	11,556.00	11,556.00	IU Wellness activities	Local	No
198	Opt Out Insurance	36,819.00	44,571.00	Opt Out payments for staff who opt out of the IU medical insurance	Local	No
201	PRRI	1,446,000.00	500,000.00	Pass through funds to PRRI program Harborcreek Youth Services	State	Yes
260	PA Inspired Leadership (PIL)	111,900.00	114,900.00	Professional Development for School Administrators (Act 45)	Local	No
267	TREC Grant	20,000.00	11,000.00	Grant used to assist with transportation costs for TREC field trips	Local	No
280	Adult Literacy	413,248.00	412,107.00	Provides GED, prevocational academic instruction, and English Learners (formerly ESL) instruction to adults	State	No
315	Migrant Summer Child Care	36,044.00	41,659.00	This grant covers in-home services, salaries, supplies, travel and instruction at St. Benedict's during the summer months	State	No
316	Migrant Child Care	89,159.00	77,430.00	Provides child care and transportation for migrant pre-school students at St. Benedict's and GECAC pre-school programs	State	No
319	21st Century	59,859.00	59,859.00	Peer reviewers venue and lodging for 21st Century learning applications statewide	State	No
350	SAP	148,769.00	148,804.00	The IU holds a contract with Erie County Department of Mental Health and Intellectual Disabilities to provide MH liaison services to 12 school districts (excludes Erie City) and the three Catholic high schools. At this time, the IU subcontracts with four community agencies to employ 14 individuals to support this effort. The IU provides clinical and program support to these individuals	Local	No
370	Student Assistance Program	101,022.00	29,647.00	The IU is a Commonwealth Approved Trainer for SAP services. In this capacity, the IU provides an annual training to district, charter school, non-public school and agency staff regarding the creation, maintenance and ongoing functioning of their mandated SAP teams; funding is provided by tuition charges	Local	No
380	Nonpublic Program - Act 89	3,095,053.00	3,098,124.00	State funded auxiliary services to the nonpublic schools which include guidance and counseling, assessment for educational recommendations, remedial and enrichment education, and speech and language services	State	Yes
390	Statewide System of Support (State)	77,776.00	101,128.00	PDE provided funding for various levels of support for Safe Schools Support, School Climate Regional Coordinator, and Standards Based Instruction	State	Yes
411	Title I	613,995.00	621,225.00	IU5 supports a consortia of public school districts regarding technical design and implementation of Title I programs	Federal	No
413	Migrant	1,041,441.00	1,145,434.00	Provides supplemental educational services to the children of migrant agricultural workers	Federal	No
414	Title I Institutions	231,968.00	253,099.00	Supports locally operated neglected and delinquent correctional facilities to ensure high quality educational programs	Federal	No
419	Statewide System of Support (Federal)	23,600.00	79,405.00	PDE provided funding for various levels of support for Data Governance, Keystone Exams, and Standards Based Instruction	Federal	Yes
446	N/D Advisory Committee	100,000.00	100,000.00	Provides assistance for quality Title I programs in Neglected, Delinquent, and State Correctional facilities	Federal	No
511	Preschool Incentive II	534,464.00	538,770.00	Early Intervention, federal funds to support EI staff and services, also includes Erie pass through and funds for students in EI, age five and over	Federal	Yes
520	IDEA Component I - Early Intervention	1,163,853.00	1,151,193.00	Federal funds to support Early Intervention services	Federal	Yes
520	IDEA	12,212,745.00	12,272,364.00	Federal funds to support district and IU special education services, also includes Equitable Participation and 'at-risk' programs and staff	Federal	Yes
751	Summer Foods Program	198,842.00	219,167.00	Funds the administration and implementation of the free and reduced lunch programs through the summer months	Federal	No
810	ABE/GED Community Based	738,042.00	757,222.00	Federal funding used to improve skills needed to assist adults in passing the GED	Federal	No

Funding Source	Description	2019-2020 Adopted Budget	2020-2021 Preliminary Budget	Program Narrative	Funding Type	Mandatory
864	ELECT	472,100.00	489,258.00	Education Leading To Employment and Career Training (ELECT) is a program to promote healthy pregnancy for the expectant mother and father, a healthy delivery while at the same time working to keep the expecting parents in school as they complete their education and transition successfully into the world of work. Case Managers are employed through the ELECT Program, in the counties of Crawford, Erie, Venango, Clarion, Forest and Warren. The ELECT Program is grant funded through PDE and housed at IU5	Federal	No
880	Talent Search	310,195.00	323,067.00	Provides academic assistance and motivates 538 low-income, first generation students in grades 6-12 to pursue postsecondary education	Federal	No
881	Upward Bound Math Science	291,394.00	303,480.00	Supports 52 low-income, first generation students in grades 9-12 to pursue post-secondary education in the fields of mathematics and science	Federal	No
890	School Age ACCESS	332,081.00	331,383.00	MA funds that support health-related services for Special Needs students for school age	Federal	No
893	Early Intervention ACCESS	355,854.00	418,161.00	MA funds that support health-related services for Special Needs students for three to five year olds, Early Intervention	Federal	No
23	Special Education Fund	11,008,456.00	11,685,720.00	Local funds for supporting Special Ed services and staff, IU programs that support the districts	Local	Yes
24	Special Ed Transportation Fund	2,690,897.00	2,635,783.00	EI and School Age, received from State through the District's Transportation Subsidy, special needs transportation	State	Yes
25	Institutional Fund	72,307.00	74,595.00	Provides funds to Erie Homes and Warren State Hospital Special Ed staff and programs	State	Yes
26	Early Intervention Fund	6,317,253.00	6,087,090.00	State funds use to provide Early Intervention Services for IU5 area, except Erie City	State	Yes
62	Workers' Compensation	67,770.00	71,214.00	Workers Compensation	Local	N/A
63	Hospitalization Fund	4,796,019.00	4,944,179.00	Hospitalization	Local	N/A
64	Unemployment Compensation Fund	57,272.00	62,968.00	Unemployment Compensation	Local	N/A
100	Walmart Grant - OT			INACTIVE - Grant to provide iPADS to OT/PT staff	Local	
102	Title I - Corry SD			INACTIVE - Title I Carryover for Corry Area School District - pass through fund	Local	
103	Autism Society Grant - Waterford			INACTIVE - Funds received from Autism Society to support supplies in new class at Waterford Elementary	Local	
108	PDE Training Administration			INACTIVE - PDE Grant	Local	
111	eFund Grant (IU #6)			INACTIVE - PDE Grants to build wide area networks	Local	
112	Computer Fair			INACTIVE - Local competition to qualify for the Pennsylvania High School Computer Fair. Annual event that highlights PA high school students' application skills and computer knowledge	Local	
113	Cyber Services			INACTIVE: Provides alternative to cyber charter schools	Local	
116	PA Educator			INACTIVE - Website used for applications. IU5 continues to partner with PA Educator net	Local	
118	eFund Grant Two (IU #5)			INACTIVE - Continuation of WAN Buildout grant from PDE	Local	
119	EI Erie Community Foundation Grant			INACTIVE - Providing Pre-K Teachers with High Quality Staff Development	Local	
121	Career Education Efforts			INACTIVE	Local	
122	Early Intervention Inclusion Grant			INACTIVE - Grant to support inclusionary activities in Early Intervention	Local	
123	PaTTAN			INACTIVE - Dyslexia Project funded through a contract with PaTTAN and provides intensive support to the Millcreek Township School District to aid in the implementation of the Dyslexia Screening and Early Literacy Intervention Pilot Program under Act 69 of 2014.	Local	
127	Child Development Associates			INACTIVE - Provide training to acquire CDA certification	Local	
128	MASTERS			INACTIVE - A one-week summer experience in math and science for highly talented elementary students in grades 2 through 6	Local	
129	Preschool Supervisors			INACTIVE - Funding from MAWAs from Western region to support their monthly meetings. funds went back to MAWAs	Local	
130	Public School Campaign			INACTIVE - 18 month advertising campaign supported by member district contributions to highlight the benefits of regional public schools	Local	
131	NE Community Foundation Grant - Fadale			INACTIVE - Grant to provide iPADS to North East SD autistic class	Local	
132	PAUnet - Keystone Catalog			INACTIVE - Statewide initiative encouraging IUs to share services statewide	Local	
133	Corry Area SD SIG Grant			INACTIVE - Pass through funding for Corry Area School District. Used to pay SIG salaries for Corry staff	Local	
134	HC Autistic Foundation Grant (Fritts)			INACTIVE - Autism Grant	Local	
135	PDE Initiatives			INACTIVE - PDE provided funding for various levels of support for Teacher, Principal, & Educator Effectiveness, SLOs, Keystone Exams/PBAs: PA Common Core; PIMS. Comprehensive planning/School Improvement; SAS; and eMetric/PVAAS/Data	Local	
137	Autism Awareness			INACTIVE - funds that supported activities hosted by IU during Autistic Awareness month, April	Local	
139	Flipcam Grant - Autistic			INACTIVE - Grant that supported purchase of FlipCams for Autistic classes	Local	

Funding Source	Description	2019-2020 Adopted Budget	2020-2021 Preliminary Budget	Program Narrative	Funding Type	Mandatory
140	I.U. Curriculum Programs			INACTIVE - Curriculum Programs	Local	
141	Tech Integration Mentor Project			INACTIVE - Provides mentoring & support to the 21 st Century Teaching & Learning coaches	Local	
142	Keystones to Opportunities (KtO)			INACTIVE - Initiative to advance literacy skills, including pre-literacy skills, reading, and writing, for students from birth through grade 12, including limited-English-proficient students and students with disabilities	Local	
144	Data Handbook Grant			INACTIVE - Grant from PDE to create a Data Handbook	Local	
145	DEP Erie Conservation Grant			INACTIVE - Grant for schools to dispose of harmful chemicals	Local	
146	Governor's Institute			Early learning initiative funded by the Governor's office	Local	
149	PDE Intergovernmental Agreement			INACTIVE - Permits the IU to bid on and carry-out PDE initiatives	Local	
152	Autistic Support Transition Grant			INACTIVE - Federal grant that supported transition programs to our 18-21 year old AS classrooms	Local	
153	Regional Summer Foods			INACTIVE - Summer Foods Grant from PDE for Statewide Monitors	Local	
154	Transition Performance Grant			INACTIVE Funds used to provide trailer for transitions services and for transition curriculum, OVR funds	Local	
155	Student Learning Objective (SLO)			INACTIVE-a contract we had with PDE to arrange SLO trainings state-wide when SLO	Local	
157	Johnny E. Horan Garden Apartment (JERGA)			INACTIVE - Provides a comprehensive job development and related Adult Ed program for public housing residence of the John Horan Garden Apts. and Bird Drive	Local	
158	Adult Education Lead Consultant			INACTIVE - Provide professional development and consultation to Adult Education providers	Local	
158	HERO			INACTIVE - Adult Ed Grant	Local	
159	Adult Education			INACTIVE - Adult Education Services not included in State and Federal Grants	Local	
160	Reading Recovery			INACTIVE - Short term intervention for children who have the lowest achievement in literacy in the first grade. Program duration is 12-20 weeks for 30 minutes each day	Local	
161	Literacy Design Collaborative (LDC)			INACTIVE - Grant to provide PD to secondary content areas teachers to integrate literacy	Local	
162	Foundation Grant - Stadler			INACTIVE - Grant that supported purchase of iPads for Autistic class	Local	
163	IU 5 Engineering Pilot Program (MAGPD)			INACTIVE - A collaborative online learning opportunity for engineering students and the TEK4S program	Local	
164	TEK4S			INACTIVE - Student program to hone 21st century skills essential to learning while fostering the use of emerging technologies to strengthen the pedagogical practices of educators within their school district	Local	
165	eFund Grant for the Diocese			INACTIVE - PDE Grant for the Diocese WAN	Local	
166	STEM Budget			INACTIVE - IU5 serves on the Advisory Council of the NWPA STEM Alliance. Handles registration for annual conference and issues contracts for guest speakers	Local	
167	EI Positive Behavior Support Project			INACTIVE - OCDEL funds to support staff to be trained in Positive Behavior, used for turn around training and continued support to staff in this regard	Local	
169	Erie County School-to-Career			INACTIVE - The Erie Area School-to-Career Partnership provided career awareness and exploration activities to school districts in Erie County	Local	
170	Edmund Thomas Shelter Care			INACTIVE - funds that supported the classroom staff and supplies, now closed	Local	
173	Andromeda House			INACTIVE - Funds to support Special Ed and Alt Ed students in residential program, one classroom, Union City	Local	
174	Perseus House Partial			INACTIVE - Funds to support Acute MH day treatment school program, one classroom, all of Erie County districts, located in Erie City	Local	
178	Vision Quest Alternative Ed Program			INACTIVE -Funds to support Special Ed and Alt Ed students in residential programs, one classroom, located in PENNCREST	Local	
185	Share Northwest			INACTIVE - IU was the fiscal agent for the Library group	Local	
190	Student Forum			INACTIVE - Student leaders from the IU5 region met four times a year to discuss solutions to common school-related and community issues	Local	
191	SES - GECAC			INACTIVE - Funds provided supplemental educational services to GECAC Charter School (now called RBWiley Charter)	Local	
245	Alternative Ed Disruptive Youth			INACTIVE - State funds through grant that supported AEDY program	Local	
250	ACTS			INACTIVE - Aligning curriculum to standards in Pennsylvania	Local	
251	Math Design Collaborative (MDC)			INACTIVE - The PA- Math Design Collaborative for Elementary grades 3-5 will provide teachers with Formative Assessment Lessons (FALS) to engage students in a productive struggle that builds fluency with procedural skills and deepens mathematical reasoning and understanding	Local	
252	Project MAX			INACTIVE - Project MAX is MAXimizing Access and Learning for all students. The purpose is to increase the capacity of PA schools to provide all students, including those with complex instructional needs, with maximum access to the general ed. curriculum and PA. Academic Standards.	Local	
261	Level 1 - School Improvement			INACTIVE - Building Capacity Initiative to provide support for school improvement services	Local	

Funding Source	Description	2019-2020 Adopted Budget	2020-2021 Preliminary Budget	Program Narrative	Funding Type	Mandatory
262	PA Benchmark Assessment			INACTIVE - Grant for Assessment Services	Local	
272	PA Literacy Framework			INACTIVE - Literacy coaching initiative	Local	
274	Regional Summer School of Excellence			INACTIVE - Two weeks of intensive laboratory and field site study in the life sciences in partnership with Gannon University held in July for outstanding sophomore and junior science students	Local	
311	Adult Ed - Classroom Instruction			INACTIVE - Adult Ed Grant	State	
312	Adult Ed - Career Gateway			INACTIVE - Adult Ed Grant	State	
320	Family Literacy			INACTIVE - Provides a comprehensive program to Warren County families including adult literacy education, early childhood education, parenting education, and interactive literacy activities	State	
325	Family Literacy Summer Reading			INACTIVE - Adult Ed Grant	State	
352	Safe Schools Grant			INACTIVE - State grants written to help support regional staff development and safe school training activities	State	
354	Trans-Agency BLTs			INACTIVE - District funded, improve Building Level Teams to include Agency involvement	State	
355	HiFi			INACTIVE - Erie County/DPW funds that supported identified MH students	State	
357	HiFi Mini-Grant			INACTIVE - HiFi Grant	State	
364	Safe Schools Initiative			INACTIVE - State grants written to help support regional staff development and safe school activities	State	
380	GO College			INACTIVE - Provides academic assistance and career advisement to cohorts of 9th graders to continue throughout their school careers so that all are successful in planning, enrolling, and completing college	State	
414	Migrant Carryover			INACTIVE - Funds from the Migrant Education Program that can be carried over into a new funding year	Federal	
415	Migrant Child Care			INACTIVE - Provides child care and transportation for migrant pre-school students at St. Benedict's pre-school program	Federal	
416	Migrant Middle School Grant			INACTIVE - This one-time grant was used to supplement the Migrant Bayfront Summer Program for migrant children	Federal	
417	Migrant OSY Grant			INACTIVE - A one-time grant that was used to provide out of school youth with Rosetta Stone licenses, laptops, headsets, transportation, and dictionaries	Federal	
421	Title IIA			INACTIVE - Federal funding through IU5 to assist nonpublic schools in the region to support preparing and training highly qualified teachers	Federal	
430	PDE Initiatives			INACTIVE - PDE provided funding for various levels of support for Teacher, Principal, & Educator Effectiveness; SLOs, Keystone Exams/PBAS; PA Common Core, PIMS; Comprehensive planning/School Improvement; SAS; and eMetric/PVAAS/Data	Federal	
442	Academic Achievement Award AAA			INACTIVE - Additional funds awarded to select schools who meet distinguished criteria through Title I	Federal	
447	Title I Parent Mini-Grants			INACTIVE - Small mini-grants provided through Title I funding	Federal	
450	Title V			INACTIVE - Federal funding through IU5 to assist nonpublic schools in the region to support innovation and educational improvement	Federal	
463	Title IID/EEIT			INACTIVE - Federal funding through IU5 to assist nonpublic schools in the region to enhance education through technology	Federal	
464	Title II Part B Math & Science			INACTIVE - To increase academic achievement of students in mathematics and science by enhancing the content knowledge and teaching skills of classroom teachers	Federal	
466	Safe and Drug-Free Schools/Community			INACTIVE - Federal funding through IU5 to assist nonpublic schools in the region to develop prevention programming	Federal	
673	Tech Prep			INACTIVE - A consortia of districts to assist career and technical instructors with the development and implementation of new and rigorous programs of study and activities designed to prepare all CTC students for postsecondary and career success	Federal	
811	Move Up			INACTIVE - Adult Education provided at St. Benedict's	Federal	
830	EL Civics			INACTIVE - Adult Education grant that ended in 2010	Federal	
840	Elementary Foreign Language			INACTIVE - Federal grant to provide elementary students with an introduction to Spanish	Federal	
870	TAS			INACTIVE - Federal grant to increase teachers' American history content knowledge & research-based pedagogy	Federal	
871	TAH			INACTIVE - Federal grant to increase teachers' American history content knowledge & research-based pedagogy	Federal	
874	Coastal Zone			INACTIVE - Funding to help support RSSE which is sponsored in partnership with Gannon University	Federal	
882	RCEP - Mini Grant			INACTIVE - Regional Center for Workforce Excellence Program (Workforce Investment Board)	Federal	
885	Page One			INACTIVE - Assist districts with the adoption of meaningful statewide high school graduation requirements -- ensuring that all students demonstrate the essential skills in English, math, science and social studies in order to graduate	Federal	
981	ARRA - IDEA Part B			INACTIVE - Stimulus IDEA funds, school age	Federal	
982	ARRA - IDEA, Section 619			INACTIVE - Stimulus IDEA funds, Early Intervention	Federal	
983	ARRA - Title I, Part A			INACTIVE - Stimulus Title I funds	Federal	
992	ARRA - Title I, Part D			INACTIVE - Stimulus Title I funds	Federal	

Funding Source	Description	2019-2020 Adopted Budget	2020-2021 Preliminary Budget	Program Narrative	Funding Type	Mandatory
598	ARRA - Race to the Top			INACTIVE - Pass thru funds for School Districts	Federal	

Local Programs Total	27,768,838.00	29,250,297.00
State Programs Total	14,815,774.00	13,584,192.00
Federal Programs Total	18,620,574.00	19,003,228.00



pennsylvania
DEPARTMENT OF EDUCATION

December 19, 2019

Dr. Dean Maynard
Executive Director
Northwest Tri-County IU 5
252 Waterford St
Edinboro, PA 16412-2373

Re: General Operating Payment

Dear Dr. Maynard:

The enclosed information is to provide to you with information regarding the data used to calculate the Intermediate Unit's General Operating payment of \$1,012,662.99 made in the December 2019 Unipay.

The basis for this payment was the School District Withholdings from the 2019-2020 General Fund Budget submitted into CFRS (Consolidated Financial Reporting System).

Deductions for your member school districts were made from the December 2019 Basic Education Funding payment. Attached to this letter is the School District Withholding Contribution Schedule (PDE-2055) for 2019-2020.

Sincerely,

Benjamin T. Hanft, Chief
Division of Subsidy Administration

Enclosure

cc: Business Manager

Pennsylvania Department of Education
Intermediate Unit Contribution Schedule

PDE- 2055
12/17/2019

Membership District Support

Program Budget Number 1

For the Fiscal Year July 1, 2019 to June 30, 2020

Northwest Tri-County IU 5

IU: 05

Excess Expenditures \$850,116.00

Total Weight Factor 20,691.625416

Member District	2019-2020 MV AR	2017-2018 WADM	Weight Factor	Contribution
Conneaut SD	0.5641	2,478.029	1.080.172841	\$44,378.93
Corry Area SD	0.7569	2,385.874	580.005969	\$23,829.56
Crawford Central SD	0.6860	4,423.321	1,388.922794	\$57,063.93
Erie City SD	0.7865	14,956.714	3,193.258439	\$131,195.11
Fairview SD	0.5212	2,004.417	959.714860	\$39,429.91
Fort LeBoeuf SD	0.3974	2,574.063	1,551.130364	\$63,728.23
General McLane SD	0.5917	2,580.981	1,053.814542	\$43,296.00
Girard SD	0.7221	1,968.561	547.063102	\$22,476.10
Harbor Creek SD	0.5818	2,572.660	1,075.886412	\$44,202.82
Iroquois SD	0.8213	1,470.675	262.809623	\$10,797.54
Millcreek Township SD	0.4611	7,828.120	4,218.573868	\$173,320.22
North East SD	0.6829	1,973.780	625.885638	\$25,714.53
Northwestern SD	0.7091	1,636.441	476.040687	\$19,558.14
Penncrest SD	0.6802	3,433.439	1,098.013792	\$45,111.93
Union City Area SD	0.7738	1,294.250	292.759350	\$12,028.03
Warren County SD	0.6944	5,408.689	1,652.895358	\$67,909.25
Wattsburg Area SD	0.6083	1,620.316	634.677777	\$26,075.75
Total:		60,610.330	20,691.625416	\$850,115.98

Weight Factor = (1-MV AR) * WADM

Contributions = Weight Factor * Excess Expenditures/Total Weight Factor

Pennsylvania Department of Education
Intermediate Unit Contribution Schedule

PDE- 2055
12/17/2019

Membership District Support

Program Budget Number 11

For the Fiscal Year July 1, 2019 to June 30, 2020

Northwest Tri-County IU 5

IU: 05

Excess Expenditures \$23,734.00

Total Weight Factor 20,691.625416

	2019-2020	2017-2018		
Member District	MV AR	WADM	Weight Factor	Contribution
Conneaut SD	0.5641	2,478.029	1,080.172841	\$1,239.00
Corry Area SD	0.7569	2,385.874	580.005969	\$665.29
Crawford Central SD	0.6860	4,423.321	1,388.922794	\$1,593.14
Erie City SD	0.7865	14,956.714	3,193.258439	\$3,662.78
Fairview SD	0.5212	2,004.417	959.714860	\$1,100.83
Fort LeBoeuf SD	0.3974	2,574.063	1,551.130364	\$1,779.20
General McLane SD	0.5917	2,580.981	1,053.814542	\$1,208.76
Girard SD	0.7221	1,968.561	547.063102	\$627.50
Harbor Creek SD	0.5818	2,572.660	1,075.886412	\$1,234.08
Iroquois SD	0.8213	1,470.675	262.809623	\$301.45
Millcreek Township SD	0.4611	7,828.120	4,218.573868	\$4,838.85
North East SD	0.6829	1,973.780	625.885638	\$717.91
Northwestern SD	0.7091	1,636.441	476.040687	\$546.03
Penncrest SD	0.6802	3,433.439	1,098.013792	\$1,259.46
Union City Area SD	0.7738	1,294.250	292.759350	\$335.80
Warren County SD	0.6944	5,408.689	1,652.895358	\$1,895.93
Wattsburg Area SD	0.6083	1,620.316	634.677777	\$728.00
Total:		60,610.330	20,691.625416	\$23,734.01

Weight Factor = (1-MV AR) * WADM

Contributions = Weight Factor * Excess Expenditures/Total Weight Factor

Pennsylvania Department of Education
Intermediate Unit Contribution Schedule

PDE- 2055
12/17/2019

Membership District Support

Administrative Budget

For the Fiscal Year July 1, 2019 to June 30, 2020

Northwest Tri-County IU 5

IU: 05

Excess Expenditures \$138,813.00

Total Weight Factor 20,691.625416

Member District	2019-2020 MV AR	2017-2018 WADM	Weight Factor	Contribution
Conneaut SD	0.5641	2,478.029	1,080.172841	\$7,246.51
Corry Area SD	0.7569	2,385.874	580.005969	\$3,891.06
Crawford Central SD	0.6860	4,423.321	1,388.922794	\$9,317.81
Erie City SD	0.7865	14,956.714	3,193.258439	\$21,422.47
Fairview SD	0.5212	2,004.417	959.714860	\$6,438.40
Fort LeBoeuf SD	0.3974	2,574.063	1,551.130364	\$10,406.00
General McLane SD	0.5917	2,580.981	1,053.814542	\$7,069.68
Girard SD	0.7221	1,968.561	547.063102	\$3,670.06
Harbor Creek SD	0.5818	2,572.660	1,075.886412	\$7,217.75
Iroquois SD	0.8213	1,470.675	262.809623	\$1,763.10
Millicreek Township SD	0.4611	7,828.120	4,218.573868	\$28,300.96
North East SD	0.6829	1,973.780	625.885638	\$4,198.85
Northwestern SD	0.7091	1,636.441	476.040687	\$3,193.59
Penncrest SD	0.6802	3,433.439	1,098.013792	\$7,366.20
Union City Area SD	0.7738	1,294.250	292.759350	\$1,964.02
Warren County SD	0.6944	5,408.689	1,652.895358	\$11,088.71
Wattsburg Area SD	0.6083	1,620.316	634.677777	\$4,257.83
Total:		60,610.330	20,691.625416	\$138,813.00

Weight Factor = (1-MV AR) * WADM

Contributions = Weight Factor * Excess Expenditures/Total Weight Factor

23 - Special Education Revenue

REVENUE		Total
Function	Description	
6944	Receipts from Other LEAs in PA - IU Early Intervention	515,568
6944	Receipts from Other LEAs in PA - Franklin Area	84,973
6944	Receipts from Other LEAs in PA - Oil City Area	60,529
6944	Receipts from Other LEAs in PA - Harborscreek Youth Services	31,292
6944	Receipts from Other LEAs in PA - IU Classroom	328,250
6944	Receipts from Other LEAs in PA - Institutions & Non-Public	34,034
6948	Receipts From Members of IU - Conneaut	743,500
6948	Receipts From Members of IU - Corry Area	552,924
6948	Receipts From Members of IU - Crawford Central	1,147,743
6948	Receipts From Members of IU - Erie's Public Schools	585,000
6948	Receipts From Members of IU - Fairview	237,668
6948	Receipts From Members of IU - Fort LeBoeuf	307,787
6948	Receipts From Members of IU - General McLane	248,780
6948	Receipts From Members of IU - General McLane (Out of Region)	95
6948	Receipts From Members of IU - Girard	138,711
6948	Receipts From Members of IU - Harbor Creek	437,472
6948	Receipts From Members of IU - Iroquois	229,046
6948	Receipts From Members of IU - Millcreek Township	131,145
6948	Receipts From Members of IU - North East	284,655
6948	Receipts From Members of IU - Northwestern	596,017
6948	Receipts From Members of IU - PENNCREST	839,133
6948	Receipts From Members of IU - PENNCREST (Out of Region)	44,713
6948	Receipts From Members of IU - PENNCREST (Ward of State)	3,785
6948	Receipts From Members of IU - Union City Area	212,157
6948	Receipts From Members of IU - Warren County	25,722
6948	Receipts From Members of IU - Wattsburg Area	165,401
6948	Receipts From Members of IU - Erie Rise Leadership Academy	56,400
6948	Receipts From Members of IU - Montessori Regional Charter School	88,514
6948	Receipts From Members of IU - Perseus House Charter School of Excellence	34,308
6948	Receipts From Members of IU - Robert Benjamin Wiley Community Charter School	47,348
6948	Receipts From Members of IU - Tidioute Community Charter School	97,024
6999	Misc Revenue	29,679
7271	Special Education Core Allocation	1,979,176
7810	Social Security Reimbursement	245,709
7820	Retirement Reimbursement	1,121,462
Total		11,685,720